



Chassis Brace Installation Instructions

Covers Part #6730A, 6730G, 6730R, 6730X

Kit contents:

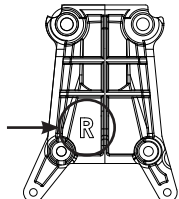
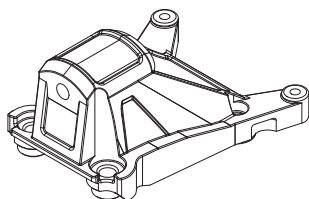
- Front chassis brace mount (short) (1) (for use on Rustler 4X4)
- Front chassis brace mount (long) (1) (for use on Slash 4X4 models equipped with Low-CG Chassis)
- Rear chassis brace mount (1)
- Chassis brace rod (1)
- 3x8mm cap screws (2)
- 3x14mm cap screws (2)
- 4x16mm button-head cap screws (2)
- 4x18mm button-head cap screws (4)

Tools required:

- 2.5mm hex wrench

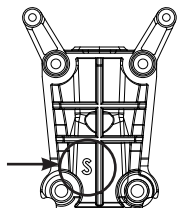
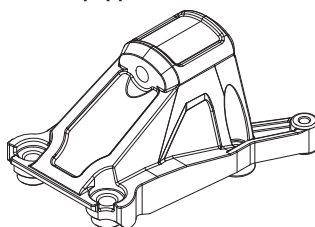
Use this kit part on the Rustler 4X4:

BOTTOM VIEW



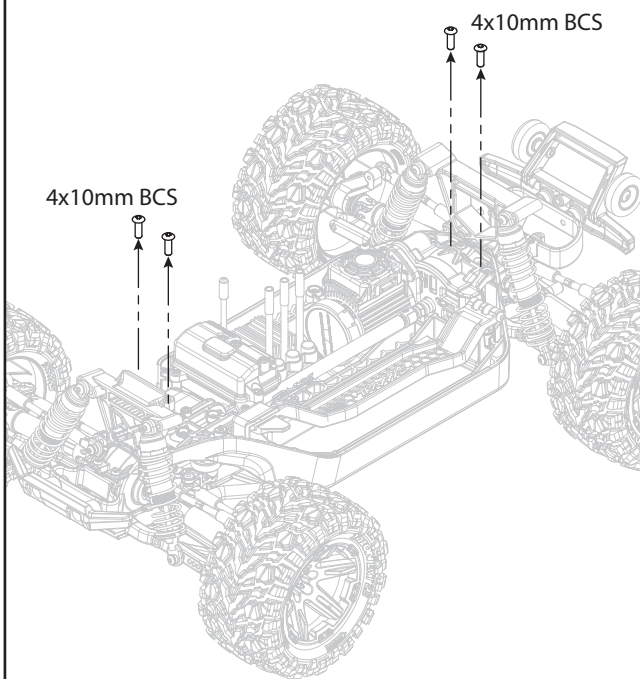
Use this kit part on the Slash 4X4 (models equipped with Low-CG Chassis):

BOTTOM VIEW



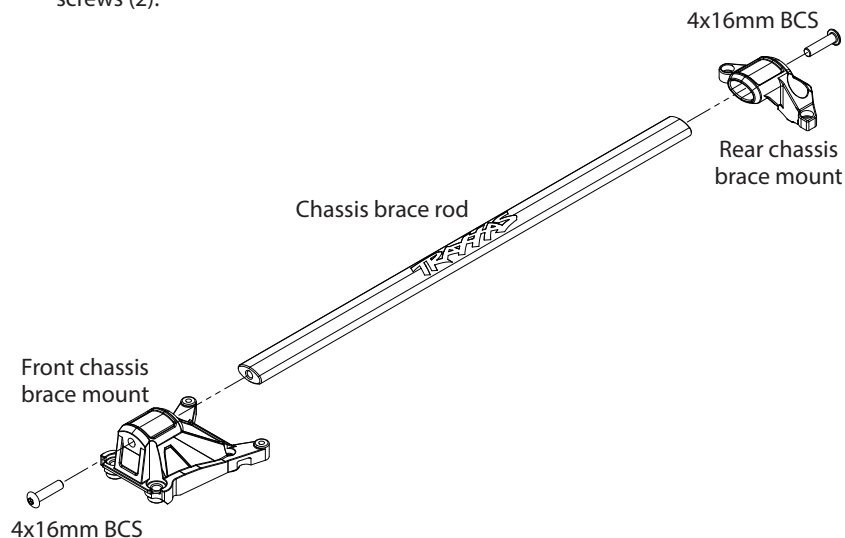
2

Remove the 4x10mm button-head cap screws (4) from the chassis.



1

Assemble the chassis brace using the included 4x16mm button-head cap screws (2).



3

Install the brace on the chassis using the included 3x8mm cap screws (2), 3x14mm cap screws (2), and 4x18mm button-head cap screws (4).

